



BETWEEN THE STACKS

October 2024

A publication by Iberia Parish Library
Serving Iberia Parish for nearly 80 years!

Issue No. 57

Featured Events 2

Family Programming 4

Online Resources 5

Adult Programming 6

Book Clubs 7

Teen Programming 8

Children's Programs 9

Storytimes 13

HALLOWEEN AT THE LIBRARY

- TERROR ON THE TECHE
- TONIGHT'S SKY WITH DAVE HOSTETTER
- FALL HARVEST HOUSE
- FUN HALLOWEEN CRAFTS FOR ALL AGES
- AND MORE!



Terror on the Teche

Sat, Oct. 26 | 6:00-7:30 PM

Join us for our 41st annual Terror on the Teche! Come have a fun time with Halloween-themed games followed by dynamic storytelling from Louisiana grown storyteller, MaMa SaBa! For more information about Terror on the Teche, see page 3.

Featured Events

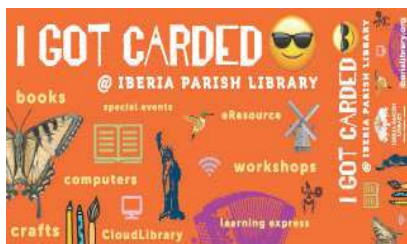
New Library Cards

Library Cards

THEY'RE HERE! New library cards are available to ALL patrons for FREE for a limited time. These cards are designed by local artist, Kate Ferry. Each age group has a unique design, and a keychain card is included!

In compliance with Louisiana Revised Statute 25:225, these cards restrict library materials checked out to minors. Children ages 6-12 can check out materials from the Children's Department. Teens ages 13-17 can check out materials from the Children's Department and the Teen section of the library. Parents/Guardians have the choice to "Opt Out" of restrictions for their teens. Adults ages 18 and above have free access to all collections offered by the library.

The new cards are available at all Iberia Parish Library locations. Parents/guardians MUST be with the child and/or teen to sign off on their new library cards.



Holiday Diamond Art

A touch of the holiday season in October!

Tues, Oct. 15 | 10:00 AM-12:30 PM | Main Library | Ages 18+

The holiday season is right around the corner! Come by the Main Library to create a holiday/winter-themed diamond art! Participants will start on their diamond art project at the Main Library and complete it at home over a five week period. Participants must return their completed and framed piece to the Main Library by Tuesday, November 19th. All diamond art pieces will be put on display at the Main Library for the entire month of December!

***Registration is required as spots are limited.**

***Diamond art and frames will be provided by the library.**

Lawyers in Libraries

October | Dates & Times To Be Announced | Main Library

Iberia Parish Library will participate in the annual "Lawyers in Libraries" statewide program in partnership with the Louisiana State Bar Association (LSBA), the State Library of Louisiana, and the Louisiana Library Association. Library patrons will have the opportunity to meet with an attorney for brief consultations in person. Consultations will be by appointment only.



Terror on the Teche

Featuring MaMa SaBa

Sat, Oct. 26 | Open to all ages

Courtyard next to the Main Library

6:00-6:30 PM Games

6:30-7:30 PM Performance by MaMa SaBa

Families will have a frigheningly good time at this year's 41st annual Terror on the Teche with family-friendly Halloween tales told by storyteller MaMa SaBa!

Phyllis D. Jason, a life-long Louisiana resident fondly known as “MaMa SaBa,” has entertained children for well over thirty years at libraries, schools, churches, and community centers in Orleans, Jefferson, St. Tammany and Lincoln parishes. She earned the name “MaMa SaBa” meaning “mother of seven,” in Swahili, after the birth of her seventh child. She dynamically energizes her audiences as she steps into the life of her audiences, weaving folktales, tall tales, funny tales, and just plain “ole” tales for kids from five to ninety-five. No matter what the choice of story, she takes her audience on a grand journey through character-filled tales as she leads them “From Here to Yonder.” Audiences are always invited to jump into the stories by way of song and dance. She even includes a few original yarns spun from her very own pen.

There will be fun games for children to participate in before MaMa SaBa's performance. Children and families are encouraged to come dressed in not-so-scary costumes, and candy treat bags will be provided for the children, while supplies last.

***Please bring your own chairs and/or blankets as there will be no chairs provided.**

***You may bring your own snacks, but please no ice chests.**

***This event is FREE of charge.**

***In the event of bad weather, this event will take place inside the Main Library.**



Family Programming



Fall Harvest House

Sat, Oct. 5 | 1:30-2:30 PM

Parkview Branch | All Ages

Families can join us at the Parkview Branch to create fall-themed houses using graham crackers and candies! ***Registration is required to attend. Children ages 12 and under must be**

accompanied by an adult.

Tonight's Sky

With Dave Hostetter

Mon, Oct. 14 | 7:00-8:00 PM | Main Library

All Ages

Astronomer Dave Hostetter will give a presentation about some of the celestial objects that can be found in the night sky! He'll also show participants how to read a star map! After the presentation we'll step outside to see the moon, constellations, and Saturn, weather permitting. ***No registration is required to attend. Children ages 12 and under must be accompanied by an adult.**



A Recipe for Fun

Families cooking together

Tues, Oct. 22 | 5:30-7:00 PM | St. Peter Branch | Ages 4+

Ms. Mandy Armentor of the LSU Ag Center teaches families how to make delicious, healthy, and easy meals! ***Registration required. Children ages 12 and under must be accompanied by an adult, no more than two children per parent/guardian. Let staff know of any dietary restrictions or allergies.**



Plant and Seed Exchange

Mon, Oct. 28 | All Day | Loreauville Branch | All Ages

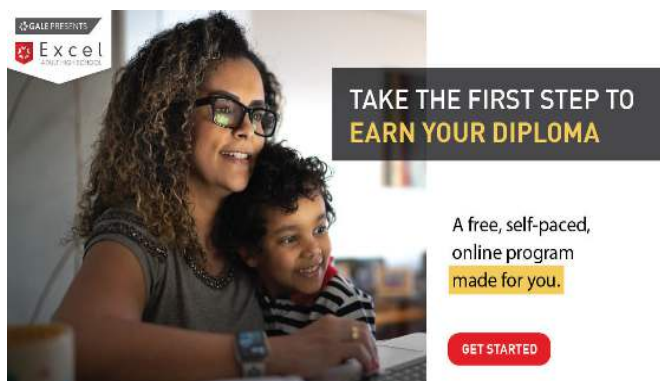
Stop by the Loreauville Branch with a plant or seeds and exchange them for another plant or seed! ***No registration is required.**

Online Resources

Gale Presents: Excel Adult High School

Earn your high school diploma!

Reach your education and career goals with *Gale Presents: Excel Adult High School*, an accredited high school completion program available free to eligible adults ages 21 and older through the library. Earn your diploma online, on your terms, and graduate ready for your next step. The program is self-paced and can be completed in



up to 24 months. Participants can graduate in less time with transfer credits. Students have access to unlimited one-on-one tutoring sessions and support from success coaches. Learn more at excelhighschool.org/library/iberia.

cloudLibrary

A new way to read e-books, audiobooks, and magazines!

The Iberia Parish Library system has migrated our eBook and audiobook service from Libby to cloudLibrary.

cloudLibrary is an easy to use app with more titles and reduced wait times.

Patrons now have access to 250,000+ copies of titles! We have also added newsStand, which can be accessed through the cloudLibrary app. NewStand gives patrons access to over 7,500 digital magazines and newspapers.

You can download cloudLibrary onto your Kindle Fire, IOS, or Android device.



Visit
Our
Website

www.iberialibrary.org

Questions?
Text a librarian for answers! We're here to help! Text AskIPL to 66746. *Standard message and data rates apply.



Device Advice

Main Library

By Appointment

Did you know our reference librarian can assist you with your electronic device? Call the reference desk at (337) 364-7305 for an appointment for assistance, tips, and advice for your device!

Adult Programming

How do I sign up?

Registration is required for all programs, unless otherwise specified. Call any branch of Iberia Parish Library or visit the Calendar of Events tab at iberialibrary.org to register. Registration for programs opens generally one week before the program date. Please note, programs may be subject to cancellation 15 minutes after the program start time, in the event of no-shows.

Tone Up the Body

Every Monday, Wednesday, and Friday
9:30-10:30 AM
Lydia Branch | Ages 40+

Walking Workouts

Every Thursday
10:00-11:00 AM
Loreauville Branch | Ages 40+



Ghost Pillow
Wed, Oct. 2
10:00-11:30 AM
Coteau Branch
Ages 18+

Halloween Wreath

Thurs, Oct. 3 | 10:30-11:30 AM
Lydia Branch | Ages 18+

Cheesecloth Ghost

Sat, Oct. 5
11:00 AM-12:00 PM
St. Peter Branch
Ages 18+



Button Ghost
Mon, Oct. 7
4:00-5:00 PM
Main Library
Ages 18+



Bathing Skeleton Candle
Mon, Oct. 14
10:30 AM-12:00 PM
Jeanerette Branch
Ages 18+

Bingo!

Mon, Oct. 14 | 3:00-4:00 PM
Main Library | Ages 50+

Join us at the library for Bingo! Once a month, we host a Bingo afternoon where you can play to win prizes!

Halloween House

Wed, Oct. 16
4:00-5:00 PM
Parkview Branch
Ages 18+



Jeanerette Movie Matinee

Fri, Oct. 18 | 2:00-4:00 PM
Jeanerette Branch | Ages 18+
This month we will be showing *E.T. The Extra-Terrestrial* (PG)



Tin Can Scarecrow

Thur, Oct. 24
4:00-5:30 PM
Loreauville Branch
Ages 18+

Book Clubs

Book club books are to be picked up and read before the meeting date. For more information about our book clubs and how they work, please call and a staff member will be happy to help. Registration is required and space is limited. Register online at iberialibrary.org or call any branch of Iberia Parish Library. We thank you for your cooperation.

Main Street Book Club

Third Thursday of each month at 5:30 PM. Main Library.
Ages 21+. (Pick up copy at Main)

October 17: *The Only One Left* by Riley Sager

Ladies Who Lunch Book Club

Third Wednesday of each month at 12:00 PM. Main Library.
Ages 21+. (Pick up copy at Main)

October 16: *The Princess of Las Vegas* by Chris Bohjalian

The Page Turners Book Club

Last Thursday of each month at 1:00 PM. Jeanerette Branch.
Ages 21+. (Pick up copy at Jeanerette)

October 31: *The Five-Star Weekend* by Elin Hilderbrand

What YA Reading? Book Club

Second Tuesday of each month at 6:00 PM. Main Library.
Ages 18-29. (Pick up copy at Main)

October 8: *Twilight* by Stephanie Meyer

Did You Know?

You can borrow this month's book club selections as an audiobook or ebook through cloudLibrary! For more information about cloudLibrary, see page 5.

I love my library because...

"I get good books."

"The people are helpful and friendly."

"They have so many fun activities for all ages!"

"It gives me a place to escape."

"It's a place to go to for learning, fun, friendship, and to get out of the house and meet people."

"I like reading the books!."

"It's a community resource for all ages and races. People have access to all kinds of information and technology by way of computers and ebooks."



Teen Programming

How do I sign up?

Registration is required for all programs, unless otherwise specified. Call any branch of Iberia Parish Library or visit the Calendar of Events tab at iberialibrary.org to register. Registration for programs opens generally one week before the program date. Please note, programs may be subject to cancellation 15 minutes after the program start time, in the event of no-shows.

Floral Ghost Watercolor Painting

Wed, Oct. 9
4:30-5:30 PM
Parkview Branch
Ages 13-17



Gilded Bat & Spider Wall Décor

Thurs, Oct. 10 | 4:00-5:00 PM
Lydia Branch | Ages 13-17
Turn a bat or spider golden and add it to a black plaque you've painted to make an elegant but creepy Halloween decoration!



Felt Owls
Thurs, Oct. 17
4:30-5:30 PM
Loreauville Branch
Ages 13-15

Pottery

Tues, Oct. 22 | 4:00-5:00 PM
Main Library | Ages 12-17
Create tiny bowls, jewelry dishes, and more using air dry clay!

Crescent Moon Wall Décor

Wed, Oct. 23
4:00-5:00 PM
Coteau Branch
Ages 12-17



Washer Necklace

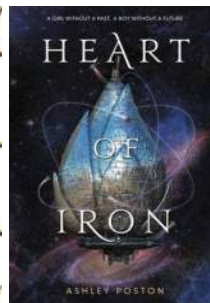
Sat, Oct. 26 | 12:00-1:00 PM
Jeanerette Branch | Ages 12-16
Learn how to make a marbled effect on washers and make a necklace out of them!



Not-So-Poisoned Apples & Other Halloween Treats

Sat, Oct. 26
1:00-2:00 PM
St. Peter Branch
Ages 13-15

Learn how to make Halloween-themed candied apples, chocolate bones, and dirt cups!
***Please inform library staff of any allergies or other dietary restrictions.**





Wednesday the Original Series Soundtrack and more are available for FREE download with Freegalmusic.com. You can now also stream music! All you need is your library card to download 5 FREE MP3 files per week! Find Freegalmusic on our webpage at iberialibrary.org.



Fiero Code is a self-guided online software program that teaches kids and teens how to code through hundreds of coding tutorials and dozens of real-world projects. Fiero Code offers a gamified learning experience with customizable avatars as you learn to build websites, video games, apps, and more! Fiero Code offers more than 300 coding tutorials all geared towards ages 8 - 18! To access Fiero Code, visit the library's online resource page at iberialibrary.org.



Free tutoring is available to you through Homework Louisiana! Homework Help is available Sun-Thurs from 2:00 PM-10:00 PM. The Skills Resource Center is available 24/7. This is a great resource for grades K-12, College Intro, and Adult Students in the subjects of Math, English, Social Studies, and Science. To access homeworkla.org, visit the library's online resource Link Library page at iberialibrary.org.

How do I sign up?

Registration is required for all programs, unless otherwise specified. Call any branch of Iberia Parish Library or visit the Calendar of Events tab at iberialibrary.org to register. Registration for programs opens generally one week before the program date. Please note, programs may be subject to cancellation 15 minutes after the program start time, in the event of no-shows.

Pumpkin Painting

Wed, Oct. 9
4:00-5:00 PM
St. Peter Branch
Ages 9-11

Paint a wooden pumpkin just in time for Halloween!



Eerie Eyeball Slime

Thurs, Oct. 10 | 4:30-5:30 PM
Loreauville Branch | Ages 8-11



Papercup Ghost

Sat, Oct. 12
11:15 AM-12:15 PM
Jeanerette Branch
Ages 5-7

Bat Day

Mon, Oct. 14
10:30-11:30 AM
Main Library
Ages 5-7



Enjoy a fun hour filled with all things bats! We'll have bat crafts and play a game of Bat Bingo!

Children's Programming

Make Your Own Ghost

Mon, Oct. 14 | 4:30-5:30 PM

Lydia Branch | Ages 8-11

Create your own ghost friend and a home for them to live!

Rummikub® Tournament

Tues, Oct. 15 | 10:30-11:30 AM

Main Library | Ages 9-11

Learn how to play Rummikub® and participate in a tournament to see who will be the winner!



Haunted House

Tues, Oct. 15

4:00-5:00 PM

Coteau Branch

Ages 8-11

Glow-in-the-Dark Bug Terrarium

Wed, Oct. 23

4:00-5:00 PM

Main Library

Ages 8-10

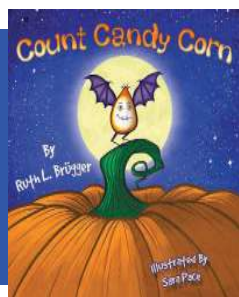


Halloween Bingo

Tues, Oct. 29 | 4:00-5:00 PM

Parkview Branch | Ages 5-7

October 30th is National Candy Corn Day! Check out the book *Count Candy Corn* by Ruth L. Brügger to celebrate!



What are Take & Make crafts?

Grab it from the library and create it at home! Take & Makes become available on the day listed and will be available while supplies last. No registration is required, bags are given out first come, first serve.

Take & Make Craft

3-D Straw Pumpkin

Mon, Oct. 14

Main Library | All Day

What are drop-in crafts?

Drop-in crafts can typically be completed within 15 minutes, with adult supervision. Dates listed are the start dates. Crafts will remain available while supplies last. Drop in crafts are for ages 4-11.

Drop-In Crafts

Make a Candy Corn

Tues, Oct. 15

St. Peter Branch | All Day

13 Drop-in Crafts of Halloween at the Parkview Branch

Paper Plate Monster Eyeball Wreath

Mon, Oct. 14 | All Day

Pumpkin Patch Rocks

Tues, Oct. 15 | All Day

Frankenstein's Monster Headbands

Wed, Oct. 16 | All Day

Haunted House Craft

Thurs, Oct. 17 | All Day

Children's Programming

13 Drop-in Crafts of Halloween at the Parkview Branch continued

Pumpkin People
Fri, Oct. 18 | All Day

Halloween Puppets
Mon, Oct. 21 | All Day

Halloween Corner Bookmarks
Tues, Oct. 22 | All Day

3-D Paper Pumpkin
Wed, Oct. 23 | All Day

Pet Spider
Thurs, Oct. 24 | All Day

Ghost Necklace
Fri, Oct. 25 | All Day

Bat Glasses
Mon, Oct. 28 | All Day

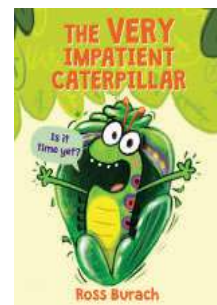
Halloween Bracelets
Tues, Oct. 29 | All Day

Halloween Paper Plate Bag
Wed, Oct. 30 | All Day

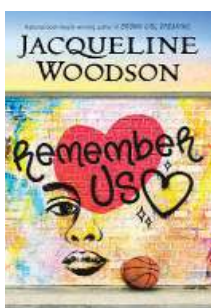
New Books for Kids



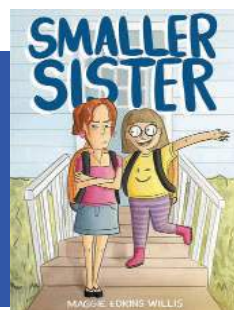
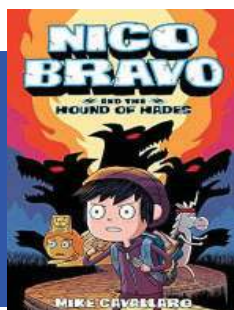
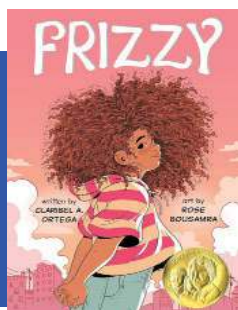
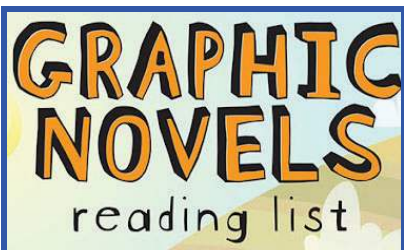
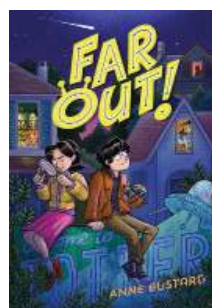
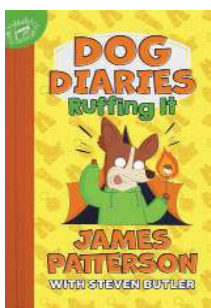
Picture Books:



Chapter Books:



Audiobooks:





A Look Into Accelerated Reading Levels

What is Accelerated Reader?

Accelerated Reader is a software program for K-12 schools for monitoring reading practice. The Iberia Parish Library may help you navigate your search for books on your level.

All branches of your Iberia Parish Library have children's and teen books to fit the needs of each student.

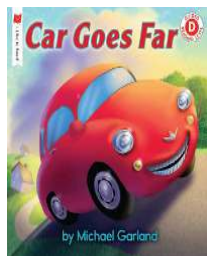
How do I know if a book is AR?

Each book has a stamp on the inside back cover or the first few pages. This stamp indicates the reading level, AR points, and a Quiz Number. If you are unsure of a book's AR information, a staff member will be happy to assist you!

Important Links:

www.arbookfinder.com

www.iberialibrary.org



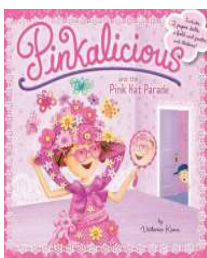
Level 0



Level 1



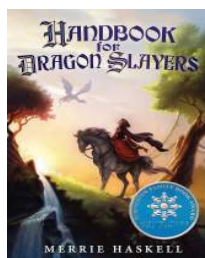
Level 2



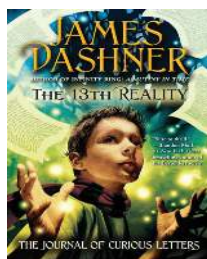
Level 3



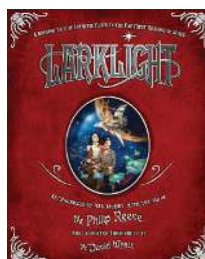
Level 4



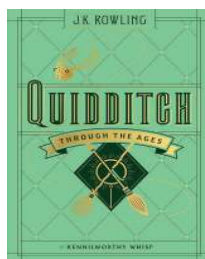
Level 5



Level 6



Level 7



Level 8

TumbleBooks

An Online Children's Library

TumbleBookLibrary is a curated database of children's e-books, available through your Iberia Parish Library!

TumbleBookLibrary has over 1,100 titles for grades K-6, and includes unique animated, talking picture books, read-along chapter books, nonfiction books and videos, curated playlists, as well as books in Spanish and French. Plus, the collection features Graphic Novels - a student favorite!

You can access TumbleBookLibrary through the eResources tab on the library's website at iberialibrary.org.



Children, ages 0-6, and their guardians are invited to join us on a mission to read 1,000 books before the first day of Kindergarten! Now available via Beanstack! Visit iberialibrary.org or speak with a staff member today!



Main Library

Storytime

10:00 AM | Every Thursday

October 3

October 10 - Fire Prevention Storytime

October 17

October 24

October 31

Baby Play

10:30 AM | 3rd Friday each month

October 18

St. Peter Branch

Storytime

4:00 PM | 3rd Wednesday each month

October 16

Parkview Branch

Storytime

10:00 AM | 2nd Tuesday each month

October 8

Jeanerette Branch

Storytime

11:00 AM | 2nd Saturday each month

October 12

Lydia Branch

Storytime

4:00 PM | 2nd Tuesday each month

October 8

Storytime

Ages 0-6 | No Registration

Enjoy a story paired with corresponding activities such as crafts, short films, and more!

Baby Play

Ages 0-18 Months

Registration Required

Enjoy sensory play and sing songs and rhymes like Pat-a-Cake and more!

Loreauville Branch

Storytime

4:00 PM | 2nd Wednesday each month

October 9

Coteau Branch

Storytime

4:00 PM | 3rd Thursday each month

October 17

Did You Know?

There are AWE Learning computers in the children's section of the Main Library, Parkview Branch, and St. Peter Branch. These computers have educational games to help with early literacy and STREAM activities.

The Early Literacy Station (ELS) is designed specifically for patrons ages 2-8, and features more than 4,000 localized learning activities. The interactive and engaging content spans all curriculum areas and covers all components of STREAM education.

August-September Programs!



The background is a bright blue color with several colorful books scattered around. There are red, green, and yellow books, some open and some closed. A white circular frame is centered on the page, containing the text. The text is in a bold, green, sans-serif font. The text reads: "THANK YOU FOR SUPPORTING YOUR IBERIA PARISH LIBRARY!".

**THANK YOU
FOR
SUPPORTING
YOUR
IBERIA
PARISH
LIBRARY!**

Iberia Parish Library
445 E. Main Street
New Iberia, LA 70560



@iberialibrary



Instagram and
Facebook

Follow us on social media!

Follow us on our Facebook and Instagram pages to see photos of past programs and to stay up-to-date on upcoming programs and library events!

Library Closures:

St. Peter Branch:

October 12: Carpet Cleaning

www.iberialibrary.org

Find us on social media

@iberialibrary!

Facebook and Instagram

Serving Iberia
Parish for nearly
80 years!



LIBRARY HOURS

MAIN LIBRARY

445 E. Main Street, New Iberia
Front Desk: 364-7024
Children's: 364-7134
Fax Number: 364-7042
Email: newiberialib@yahoo.com
Hours: Mon-Thurs 8:30 AM-8:00 PM
Fri & Sat 8:30 AM-5:30 PM
Sun 1:30 PM-5:30 PM

COTEAU LIBRARY

2306 Coteau Rd, New Iberia
Phone: 364-7430
Email: Coteau@iberialibrary.org
Hours: Mon-Fri 9:00 AM-6:00 PM
Sat 10:00 AM-3:00 PM

JEANERETTE LIBRARY

411 Kentucky Street, Jeanerette
Phone: 276-4014
Fax: 276-9595
Email: jeanerettebranch@yahoo.com
Hours: Mon-Fri 9:00 AM-6:00 PM
Sat 10:00 AM-3:00 PM

LOREAUVILLE LIBRARY

612 Ed Broussard Rd, New Iberia
Phone: 229-6348
Email: Loreauville@iberialibrary.org
Hours: Mon-Fri 9:00 AM-6:00 PM

LYDIA LIBRARY

4800 Freyou Rd, New Iberia
Phone: 364-7808
Email: Lydia_branch@yahoo.com
Hours: Mon-Fri 9:00 AM-6:00 PM
Sat 10:00 AM-3:00 PM

PARKVIEW LIBRARY

500 Grand Pré Blvd., New Iberia
Phone: 364-7480
Fax: 364-7714
Email: parkviewlib@yahoo.com
Hours: Mon-Fri 9:00 AM-6:00 PM
Sat 10:00 AM-3:00 PM

ST. PETER LIBRARY

1111 W. St. Peter Street, New Iberia
Phone: 364-7670
Fax: 364-7261
Email: stp_lib@yahoo.com
Hours: Mon-Fri 9:00 AM-6:00 PM
Sat 10:00 AM-3:00 PM

DELCAMBRE LIBRARY

206 W. Main Street, Delcambre
Phone: 685-2388
Email: delcambre@vermillion.lib.la.us
Hours: Mon-Thurs 10:00 AM-12:30 PM
1:30-5:30 PM
Fri 10:00 AM-12:30 PM
1:30 PM-5:00 PM
Sat 9:00 AM-12:00 PM