



March-April 2025

A publication by Iberia Parish Library

Issue No. 60

Serving Iberia Parish for nearly 80 years!

Featured Events 5

Family Programming 7

Online Resources 8

Adult Programming 9

Book Clubs 11

Teen Programming 12

Tween Programming 13

Children's Programs 14

Storytimes 17

SPRING EVENTS	
PAGE 2	LIBRARY TAX FAQS
PAGE 4	HISTORY OF THE LIBRARY SYSTEM
PAGE 5	SPANISH HISTORY OF LOUISIANA
PAGE 6	THE BOOKS ALONG THE TECHE LITERARY FESTIVAL EVENTS
PAGE 7	FAMILY PROGRAMS
PAGE 9	LET'S EAT FOR THE HEALTH OF IT WITH THE LSU AG. CENTER

**ELECTION DAY IS
SATURDAY, MARCH 29TH
YOUR LIBRARY IS ON THE BALLOT
FOR A LOWER TAX RENEWAL!**

Don't Forget to Vote!

The March 29th election will include the library's lower millage renewal. This parishwide millage funds ALL of the library services and operations. This is not a sales tax. Please, don't forget to cast your vote in March.

LIBRARY TAX RENEWAL FAQ

Q. When was Iberia Parish Library established?

A. Iberia Parish Library, the 26th parish library in Louisiana, opened on October 24, 1947.

Q. How long has the library been funded by a property millage?

A. 1948 - 2.0 millage approved by voters
1977 - 4.0 millage approved by voters
2014 - 6.0 millage approved by voters
2025 - seeking 4.5 millage renewal by voters

Q. Is this a new millage?

A. NO. This is a RENEWAL.

Q. Is this millage proposition an increase?

A. NO. The 4.5 millage rate is LESS than the 6.0 millage that property owners approved in 2014.

Q. Does homestead exemption apply?

A. YES. The first \$75,000 of home value is tax exempt. The library property millage on a \$100,000 home is about \$11.25 per year. This is LESS than the cost of one chicken combo or two tall (small) coffee beverages at local restaurants.

Q. What does the millage fund?

A. This dedicated millage funds EVERY aspect of the operation and maintenance of all 7 library facilities: Main, Coteau, Jeanerette, Loreauville, Lydia, Parkview, and St. Peter branches.

Q. Does the millage also fund technology like remote access digital resources?

A. YES. Operation of ALL digital resources, like eBooks and audiobooks, music, auto repair, homework tutoring, and career help etc., that individuals can access without coming into a library building and outside of regular hours.

LIBRARY TAX RENEWAL FAQ

Q. Does the library try to be cost effective with our millage dollars?

A. YES. the library actively works to control costs. It also aggressively seeks out grant funding and government cost discounts. Plus, it seeks to generate some revenue through faxing and photocopying for the public.

Q. How does this parish benefit from having libraries?

A. Iberia Parish libraries promote literacy, education, and help everyone from very young to very old. They prevent loneliness and isolation by offering movie afternoons for adults, BINGO, craft-making, and other social activities where individuals can come together to build friendship and community. Our libraries share local history, with three branches having special rooms dedicated to it, lecturers who come speak to the community about it, and exhibits that display it. Iberia Parish libraries provide free and safe meeting spaces used by students, tutors, counselors, attorneys, civic groups, self-help groups, quilting groups, and more. They prioritize programming for the whole family to attend and enjoy. They offer resources for opening your own business, receiving your high school diploma, and preparing your child for kindergarten. Iberia Parish libraries actively seek community partnerships and actively participate in off-site community events.

Q. Does this millage really benefit the whole parish?

A. YES! Here are just a few of the services we offer:

- Print books, print magazines, print newspapers, and DVDs
- High quality computers, printers, copiers, fax, and high-speed Internet and WiFi
- **FREE** remote access to eBooks, audiobooks, music, and magazines, through the library's website
- Summer Reading programs with professional performers and prizes for children and adults
- Interlibrary loan connecting patrons to books from other parishes and libraries from across the country.
- Access to database resources, including Mango Languages, Gale Legal Forms, NewsBank, Homework Louisiana, Miss Humblebee's Academy, FinancialFit, Heritage Hub, Heritage Quest, and Ancestry.com

Q. Who can vote?

A. All registered parish voters

Q. When can they vote?

A. They can vote during early voting at the courthouse, March 15 - 22, from 8:30 AM – 6:00 PM (excluding Sunday, March 16th) or on March 29, 2025, at their regular polling places from 7:00 AM – 8:00 PM.

Q. What will happen if the millage is not passed?

A. . The library system will only be able to operate for a very short time on available funds. In the end, once funding is gone, all parish citizens will lose access to **all** services, as the library will have to close.

Your Iberia Parish Library History

The Library System

The first library in New Iberia was established by members of the First Methodist Church in 1918 with only a few books from donations. On October 24, 1947, the Iberia Parish Public Library was officially formed in the old courthouse building on Main Street becoming the 26th library in the state of Louisiana. This was later followed by libraries being opened in Jeanerette, Loreauville, Weeks Island, and the Booker T. Washington Branch.

On July 13, 1948 the people of Iberia Parish voted for a 2 mill property tax for the library to continue to offer services to the public of Iberia Parish for free.

As of 1986, there were seven library locations in Iberia Parish: Main, City Park, West End Park, Jeanerette, Delcambre, Loreauville, and the Morton Branch in Lydia.

In October 1983, the longest running program at the Iberia Parish Library, Terror on the Teche, began. This tradition continues 42 years later with professional storytellers coming to entertain the people of Iberia Parish under the Legacy Oaks with Halloween tales.

1985 was the inaugural year of a program series no other library system offers: The Summer Workshop Program. This two-month long program takes place every June and July and invites children, teens, and now adults to partake in activities they may not otherwise be able to participate in. The summer workshop program is a community effort with people from around the parish, such as local artists, community groups, teachers, and more, sponsoring and leading the workshops.

Today the Iberia Parish Library system still has seven branches: Main, Parkview, St. Peter, Jeanerette, Coteau, Loreauville, and Lydia. All have public access computers, high speed Wi-Fi, books, magazines, newspapers, programs for young and old every month, and more.

The library system has entered the digital age with over 80 online resources for the public to use. eBooks and audiobooks to genealogy resources to business planning to test prep and so much more are offered.

The motto of the Iberia Parish Library is Educate, Enlighten, Entertain. Your Iberia Parish Library strives to fulfill this motto every day and continues to offer FREE services and events to ALL of Iberia Parish.

Featured Events

Get ready for the Spanish Festival

Celebrate our Spanish heritage at your library!

This year, your Iberia Parish Library is partnering with the New Iberia Spanish Festival with fun and FREE events at the library in preparation for the festival!

New Iberia Spanish Festival Youth Art Display

March 1- March 26 | All Ages | Parkview Branch

Participants of the Spanish Festival's Youth Art contest will have their artwork on display at the Parkview Branch for the month of March! You can stop by the branch to view the artwork when the meeting room is not in use.



Spanish History of Louisiana

Presented by Robert Freeland

Thurs, Mar. 6 | 6:00-7:00 PM | All Ages | Main Library

Most Louisianians know very little about Louisiana's Spanish heritage. Mr. Robert "Bob" Freeland wants to change that. Join us at the Main Library to learn about the Spanish History of Louisiana!

After retiring in 2008, Bob joined the Friends of the Cabildo as a walking tour guide. A native of Brazil, Bob speaks English, Spanish and Portuguese. He developed a love of New Orleans from his early days traveling with his family through the Port of New Orleans and eventually attending Tulane University.

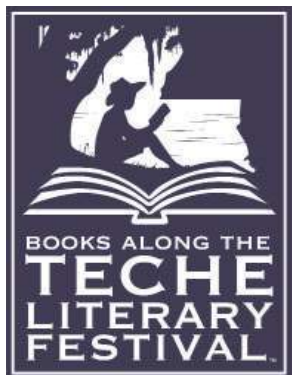
Robert enjoys meeting educators' needs by conducting tours in Spanish and breaking down the historical and traditional meanings behind the items included in his tours. Mr. Freeland is a long time member of several organizations whose mission is to educate the public on Spanish history and how it has cultivated Louisiana's culture. Those organizations include: Los Islenos Heritage and Cultural Society, Friends of the Cabildo, The Order of the Granaderos y Damas de Gálvez, La Association Espanol de Nueva Iberia, and many more. Through his memberships, Mr. Freeland continues to educate by giving lectures on Spanish history, usually portraying Bernardo de Galvez himself. ***Registration is not required to attend the presentation.**

Spanish Cookie Decorating

Sat, Mar. 8 | 11:00 AM-1:00 PM | All Ages | St. Peter Branch

Families can join us at the St. Peter Branch to learn how make and decorate churro flavored cookies! ***Registration is required to attend. Children ages 12 and under must be accompanied by an adult.**

Featured Events



Books Along the Teche Literary Festival **Library Associated Events**

L'Acadian Art Guild Reception

Fri, Apr. 4 | 1:00-3:00 PM | Main Library | All Ages

The L'Acadian Art Guild will have artwork available for viewing at the Main Library for the month of April. A reception will be held on this day to meet the artists as part of The Books Along the Teche Literary Festival.

*Some artwork will be available for sale. If interested, contact the artists for more information. All transactions are through the artists.

Poet Laureate Dr. Jack B. Bedell

Fri, Apr. 4 | 3:30-4:15 PM | Main Library | All Ages

Jack B. Bedell is Professor of English and Coordinator of Creative Writing at Southeastern Louisiana University where he also edits Louisiana Literature and directs the Louisiana Literature Press. Jack's work has appeared in HAD, Heavy Feather, Brawl Lit, Moist, and other journals. He's also had pieces included in Best Microfiction and Best Spiritual Literature. His latest collection is *Ghost Forest* (Mercer University Press, 2024). He served as Louisiana Poet Laureate 2017-2019.



Bunk Johnson Room Tour

Fri, Apr. 4 | 4:30-5:00 PM | Main Library | All Ages

For jazz enthusiasts, historians, and more! Come and take a tour of the Bunk Johnson Room at the Main Library led by our Reference Librarian, Chrystal Coon! Learn about Bunk Johnson and see some of the artifacts from his time as a jazz musician including his trumpet!

These events are part of the Books Along the Teche Literary Festival. For more information about the festival and its events, visit their website at: booksalongthetecheliteraryfestival.com

Family Programming

Dr. Seuss Bingo

Mon, Mar. 3 | 4:00-5:00 PM

Parkview Branch | All Ages

Join us at the Parkview Branch where we will play Bingo themed to Dr. Seuss' imaginative characters! ***Registration required. Children ages 12 and under must be accompanied by an adult.**



Pipe Cleaner Flower Box

Tues, Mar. 18 | 4:00-5:00 PM | Coteau Branch | All Ages

Families are welcome to join us at the Coteau Branch to learn how to make flowers out of pipe cleaners! Once you have completed creating different types of flowers, you can place them in a special box you and your family decorated! ***Registration required. Children ages 12 and under must be accompanied by an adult.**

A Recipe for Fun

Families cooking together

Tues, Mar. 25 & Apr. 29 | 5:30-7:00 PM | St. Peter Branch

Ages 4+

Ms. Mandy Armentor of the LSU Ag Center teaches families how to make delicious, healthy, and easy meals! ***Registration required. Children ages 12 and under must be accompanied by an adult. There should be no more than two children per parent/guardian. Let staff know of any dietary restrictions or allergies.**



Plant and Seed Exchange

Mon, Mar. 31 & Apr. 28 | All Day

Loreauville Branch | All Ages

Stop by the Loreauville Branch with a plant or seeds and exchange them for another plant or seed! ***No registration is required.**

Plant Pot Decorating

Tues, Apr. 22 | 4:00-5:00 PM | Coteau Branch | All Ages

Bring the whole family to the Coteau Branch to decorate plant pots for the spring time! Once the pots are decorated, we'll plant some seeds for you to care for! ***Registration required. Children ages 12 and under must be accompanied by an adult.**

Online Resources

Tech Talks

Main Library | Ages 18+ | 6:00-7:00 PM

We invite you to join in on our newest series for the month of March called Tech Talks! Our Reference Librarian will walk you through some of our newest online resources which you have access to for FREE through your Iberia Parish Library! Each week, a different resource will be highlighted. You will learn how to access these resources, how to make an account for each one, and how to use them! ***Registration is not required to attend these Tech Talks.**

Mon, Mar. 3: Gale Business: Entrepreneurship

Starting your own business? Gale Business: Entrepreneurship gives business owners 24-hour expertise on starting a business, including finance, marketing, franchising, taxes, and more!

Thurs, Mar. 13: Miss Humblebee's Academy

Do you have a little one starting kindergarten soon? Miss Humblebee's Academy is an interactive and award winning online kindergarten-readiness learning solution for children ages 3-6!

Tues, Mar. 18: Excel Adult High School

Did you know adults ages 21 and older can earn their high school diploma for FREE through the library? Excel Adult High School is a self-paced program with unlimited access to support coaches. Come to this Tech Talk to learn how to begin process.

Tues, Mar. 25: Ancestry and HeritageHub

Take a look into genealogy! Learn how you can access Ancestry.com inside the library! HeritageHub is our newest genealogy resource with in-depth obituaries starting from 1704!



**Visit
Our
Website**

www.iberialibrary.org

Questions?
Text a librarian for answers! We're here to help! Text AskIPL to 66746. *Standard message and data rates apply.



Device Advice

Main Library By Appointment

Did you know our reference librarian can assist you with your electronic device? Call the reference desk at (337) 364-7305 for an appointment for assistance, tips, and advice for your device!

Adult Programming

How do I sign up?

Registration is required for all programs, unless otherwise specified. Call any branch of Iberia Parish Library or visit the Calendar of Events tab at iberialibrary.org to register. Registration for programs opens generally one week before the program date. Please note, programs may be subject to cancellation 15 minutes after the program start time, in the event of no-shows.

Tone Up the Body

Every Monday, Wednesday, and Friday
9:30-10:30 AM
Lydia Branch | Ages 40+

Ceramic Teapot

Mon, Mar. 3 | 11:00 AM-12:00 PM
St. Peter Branch | Ages 18+
Paint your own teapot!

Charm Bottle

Thurs, Mar. 6 | 10:45-11:45 AM
Lydia Branch | Ages 18+

Let's Eat for the Health of It With the LSU Ag. Center Ages 18+

A three-part educational series on improving your health by nutrition and lifestyle will be held in March. This program will help adults increase nutrition knowledge and make better lifestyle choices. The program will be conducted by Nutrition Educators with the LSU AgCenter. The classes will be 1 hour in length.

Lydia Branch | 10:30 AM

Fri, March 7- Food Safety
Fri, March 14- MyPlate
Fri, March 21 - Physical Activity

Main Library | 5:30 PM

Mon, March 17- MyPlate & Food Safety
Mon, March 24- Reducing Sodium, Added Sugars, & Fats in the Diet
Mon, March 31- Physical Activity

Flowerpot Fairy House

Mon, Mar. 10 | 10:30 AM-12:00 PM
Jeanerette Branch | Ages 18+

Bingo!

Mon, Mar. 10 & Apr. 14
3:00-4:00 PM

Main Library | Ages 50+

Join us at the library for Bingo! Once a month, we host a Bingo afternoon where you can play to win prizes!

Beginning Crochet

Mon, Mar. 10 & Mon, Apr. 14 | 6:00-7:00 PM
Main Library | Ages 18+

Do you want to learn how to crochet but don't know where to start? Come by the Main Library to learn the basics! Ms. Janis Dugas will lead the class and assist on fine-tuning your crochet skills. ***You may bring your own yarn and crochet hooks.**

Succulent Centerpiece

Tues, Mar. 11 | 10:00-11:30 AM
Coteau Branch | Ages 18+



Plant Pot Leprechaun Hats

Fri, Mar. 14
4:00-5:00 PM
Parkview Branch
Ages 18+

Adult Programming

Travel the World at Your Library

**Wed, Mar. 19 & Apr. 16
4:30-6:00 PM**

Main Library | Ages 18+

Learn about a different country each month this year! We'll learn about the country's culture, create a craft themed to country, and learn a few simple phrases in the native language! You'll receive a passport and get a stamp for each country we "visit."

March

Spain

April

India

Jeanerette Movie Matinee

2:00-4:00 PM

Jeanerette Branch | Ages 18+

Mar. 21

The Glenn Miller Story (G)

Apr. 25

The Shoes of the Fisherman (G)



Step-by-Step Painting

Paradise Shore

Thurs, Mar. 27

4:00-5:30 PM

Loreauville Branch

Ages 18+

Easter Centerpiece

Sat, Apr. 5 | 11:00 AM-12:00 PM

St. Peter Branch | Ages 18+

Create a flower centerpiece for Easter!

No-Sew

Farmhouse

Kitchen Towel

Mon, Apr. 7

3:00-4:00 PM

Parkview Branch

Ages 18+



Spring Rabbit Decor

Wed, Apr. 9 | 10:00-11:30 AM

Coteau Branch | Ages 18+

Carrot Easter Eggs

Fri, Apr. 11 | 10:45-11:45 AM

Lydia Branch | Ages 18+

Easter Wreath

Fri, Apr. 11 | 3:00-5:00 PM

Main Library | Ages 18+

Faux Stained Glass

Mon, Apr. 14 | 10:30 AM-12:00 PM

Jeanerette Branch | Ages 18+

Gold Leaf Bowl

Thurs, Apr. 24 | 4:00-5:00 PM

Loreauville Branch | Ages 18+

Book Clubs

Book club books are to be picked up and read before the meeting date. For more information about our book clubs and how they work, please call and a staff member will be happy to help. Registration is required and space is limited. Register online at iberialibrary.org or call any branch of Iberia Parish Library. We thank you for your cooperation.

Main Street Book Club

Third Thursday of each month at 5:30 PM. Main Library.
Ages 21+. (Pick up copy at Main)

March 20: *Daisy Jones and the Six* by Taylor Jenkins Reid

April 17: *Louisiana Longshot* by Jana DeLeon

Ladies Who Lunch Book Club

Third Wednesday of each month at 12:00 PM. Main Library.
Ages 21+. (Pick up copy at Main)

March 19: *The Truth About the Devlins* by Lisa Scottoline

April 16: *Miss Morgan's Book Brigade* by Janet Skeslien Charles

The Page Turners Book Club

Last Thursday of each month at 1:00 PM. Jeanerette Branch.
Ages 21+. (Pick up copy at Jeanerette)

March 27: *Lessons in Chemistry* by Bonnie Garmus

April 24: *Becoming Madame Secretary* by Stephanie Dray

What YA Reading? Book Club

Second Tuesday of each month at 6:00 PM. Main Library.
Ages 18+. (Pick up copy at Main)

March 11: *Throne of Glass* by Sarah J. Maas

April 8: *Delicious Monsters* by Liselle Sambury

Your library operating and maintaining in 2024!

- New carpet and flooring at the Lydia Branch
- New sidewalk and handicap parking at the Main Library
- Seven new online databases added
- New signage at the Jeanerette and Parkview Branches
- Tree maintenance of the Legacy Oaks at the Main Library
- Summer workshops for adults added
- Increase in family programming added
- Offering free lectures

Teen Programming

How do I sign up?

Registration is required for all programs, unless otherwise specified. Call any branch of Iberia Parish Library or visit the Calendar of Events tab at iberialibrary.org to register. Registration for programs opens generally one week before the program date. Please note, programs may be subject to cancellation 15 minutes after the program start time, in the event of no-shows.

Mardi Gras Headwear

Thurs, Mar. 6 | 4:00-5:00 PM
St. Peter Branch | Ages 13-15

Mosaic Tile Coasters

Fri, Mar. 7 | 4:00-5:00 PM
Lydia Branch | Ages 14-17

St. Patrick's Day Gnome

Sat, Mar. 8 | 12:00-1:00 PM
Jeanerette Branch | Ages 13-16

Lucky Charm Necklaces

Mon, Mar. 17 | 4:30-5:30 PM
Parkview Branch | Ages 13-16

Felt Macaron Plush

Wed, Mar. 19
4:00-5:00 PM
Coteau Branch
Ages 14-17



Diamond Art Bookmarks
Thurs, Mar. 20
3:30-4:30 PM
Loreauville Branch
Ages 13-17

Anything But a Paintbrush

Thurs, Mar. 27 | 4:00-5:00 PM
Main Library | Ages 13-17

The goal: Paint a picture of your choice! The challenge: You can use anything EXCEPT a paintbrush! Let your creativity go wild as you paint a picture without using one of the most essential painting tools!

Rock Painting

Sat, Apr. 5 | 12:00-1:00 PM
Jeanerette Branch | Ages 13-16

Beaded Bookmark & Necklace

Thurs, Apr. 10 | 4:00-5:00 PM
St. Peter Branch | Ages 13-15

Easter Jars

Wed, Apr. 16
4:00-5:00 PM
Parkview Branch
Ages 13-16



Tennis Shoe Wire Sculpture

Thurs, Apr. 17 | 3:30-4:30 PM
Loreauville Branch | Ages 13-15

Straw Art

Tues, Apr. 22 | 4:00-5:00 PM
Main Library | Ages 13-17

Marbled Nail Polish Mugs

Wed, Apr. 23
4:00-5:00 PM
Lydia Branch
Ages 14-17



How do I sign up?

Registration is required for all programs, unless otherwise specified. Call any branch of Iberia Parish Library or visit the Calendar of Events tab at iberialibrary.org to register. Registration for programs opens generally one week before the program date. Please note, programs may be subject to cancellation 15 minutes after the program start time, in the event of no-shows.

Giant Games

Thurs, Mar. 13 | 4:00-5:00 PM
Loreauville Branch | Ages 10-12
 Play giant versions of games like Jenga and Connect 4!

Macramé Cactus

Wed, Mar. 26
4:00-5:00 PM
Coteau Branch
Ages 10-12



Collage Journal

Thurs, Mar. 27 | 4:00-5:00 PM
Main Library | Ages 10-12

Blackout Poetry

Thurs, Apr. 24 | 4:00-5:00 PM
Main Library | Ages 10-12
 Did you know April is National Poetry Month? Learn about the art of blackout poetry and create your own!



Sock Bunnies
Fri, Apr. 15
4:30-5:30 PM
Lydia Branch
Ages 10-12



Sonic the Hedgehog 3's soundtrack and more are available for FREE download with Freegalmusic.com. You can now also stream music! All you need is your library card to download 5 FREE MP3 files per week! Find [Freegalmusic](http://Freegalmusic.com) on our webpage at iberialibrary.org.



Homework Louisiana

Free tutoring is available to you through Homework Louisiana! Homework Help is available Sun-Thurs from 2:00 PM-10:00 PM. The Skills Resource Center is available 24/7. This is a great resource for grades K-12, College Intro, and Adult Students in the subjects of Math, English, Social Studies, and Science. To access lhh.tutor.com, visit the library's online resource Link Library page at iberialibrary.org.



LearningExpress
 LIBRARY™

Learning Express is a comprehensive interactive learning platform of tests, courses, and career preparation for students and adults. Build your math skills, improve your writing and grammar, or take practice tests for the ACT, Driver's Ed, and more! To access Learning Express Library, visit the library's online resource Link Library page at iberialibrary.org.

Children's Programming

How do I sign up?

Registration is required for all programs, unless otherwise specified. Call any branch of Iberia Parish Library or visit the Calendar of Events tab at iberialibrary.org to register. Registration for programs opens generally one week before the program date. Please note, programs may be subject to cancellation 15 minutes after the program start time, in the event of no-shows.

Shamrock Slime

Sat, Mar. 1 | 11:00 AM-12:00 PM
St. Peter Branch | Ages 8-10



Mario Day

Fri, Mar. 7
3:00-4:00 PM
Parkview Branch
Ages 8-10

Join us at the Parkview Branch for a fun hour themed to Mario! There will be a Mario Kart Tournament, and Mario-themed crafts such as a Mystery Cube craft box, character buttons, and more!

St. Patrick's Day Windsock

Thurs, Mar. 13
4:00-5:00 PM
Jeanerette Branch
Ages 5-7



Leprechaun Trap

A fun STEM challenge!

Thurs, Mar. 13 | 4:00-5:00 PM
Main Library | Ages 8-10

Bubble Painting & Homemade Kaleidoscopes

Thurs, Mar. 20 | 4:00-5:00 PM
Lydia Branch | Ages 8-10

Play around with colors as you paint with bubbles and create kaleidoscopes!

Step-by-Step Crayon Drawings

Mon, Mar. 31 | 4:00-5:00 PM
Main Library | Ages 5-7

Children will learn step-by-step how to create crayon drawings based on the book *I Can Crayon* by Ray Gibson.

Easter Egg Ornament

Thurs, Apr. 3
4:00-5:00 PM
Coteau Branch
Ages 8-10



Metal Easter Buckets

Wed, Apr. 9 | 4:00-5:00 PM
Parkview Branch | Ages 8-10

Give a plain, boring metal bucket a spring in its step by painting spring and Easter designs onto it!

Did you know?

All Iberia Parish Library programs and events are FREE to attend! You can see all of our upcoming events here in the newsletter and on our website at iberialibrary.org under the Calendar of Events tab!

Children's Programming

Butterfly Wings

Thurs, Apr. 10 | 4:00-5:00 PM

Loreauville Branch | Ages 5-7

Decorate a swarm of butterflies to be placed on two giant butterfly wings! The completed mural will be put on display inside the Loreauville Branch!

Paper Plate Easter Basket

Thurs, Apr. 10 | 4:00-5:00 PM

Jeanerette Branch | Ages 5-7

Indoor Easter Egg Hunt

Sat, Apr. 12

11:00 AM-12:00 PM

St. Peter Branch

Ages 5-7

Take part in a bunny scavenger hunt and an indoor Easter Egg hunt at the St. Peter Branch!



Fishbowl Bunny

Wed, Apr. 16

4:00-5:00 PM

Main Library

Ages 8-10

Dog Man Hour

Mon, Apr. 21

4:00-5:00 PM

Main Library

Ages 8-10

Join us for an hour filled with all things *Dog Man*! We'll have *Dog Man* trivia and *Dog Man*-themed crafts and games!



What are Take & Make crafts?

Grab it from the library and create it at home! Take & Makes become available on the day listed and will be available while supplies last. No registration is required, bags are given out first come, first serve.

Take & Make Crafts

Fluffy Chicken Wreath

Mon, Mar. 24

Main Library | All Day

Matador Paper Doll

Fri, Apr. 11

Main Library | All Day

What are drop-in crafts?

Drop-in crafts can typically be completed within 15 minutes, with adult supervision. Dates listed are the start dates. Crafts will remain available while supplies last. Drop in crafts are for ages 4-11.

Drop-In Crafts

Dr. Suess Glasses

Sun, Mar. 2

Main Library | All Day

Leprechaun Hats

Mon, Mar. 10

Parkview Branch | All Day

Spanish Flowers

Fri, April 11

Main Library | All Day

Maracas

Mon, April 14

St. Peter Branch | All Day

Paper Plate Bunny

Mon, April 14

Parkview Branch | All Day



A Look Into Accelerated Reading Levels

What is Accelerated Reader?

Accelerated Reader is a software program for K-12 schools for monitoring reading practice. The Iberia Parish Library may help you navigate your search for books on your level.

All branches of your Iberia Parish Library have children's and teen books to fit the needs of each student.

How do I know if a book is AR?

Each book has a stamp on the inside back cover or the first few pages. This stamp indicates the reading level, AR points, and a Quiz Number. If you are unsure of a book's AR information, a staff member will be happy to assist you!

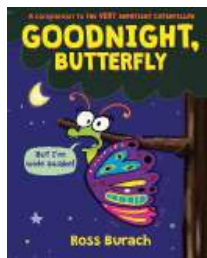
Important Links:

www.arbookfinder.com

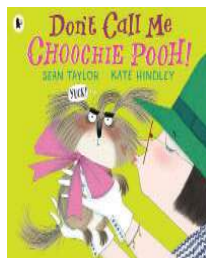
www.iberialibrary.org



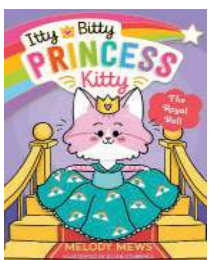
Level 0



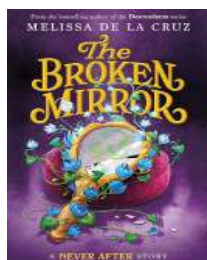
Level 1



Level 2



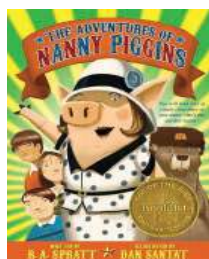
Level 3



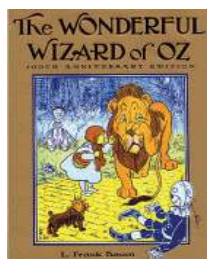
Level 4



Level 5



Level 6



Level 7



Level 8

Miss Humblebee's Academy Kindergarten Prep

Families can access Gale Presents: Miss Humblebee's Academy through your Iberia Parish Library. This award-winning program prepares children ages 3 to 6 for kindergarten proficiency with hundreds of guided lessons using videos, music, eBooks, teacher-led tutorials, and more. To ensure screen time is limited, 40 percent of the material is off-line and includes printable resources and science, technology, engineering, the arts, and mathematics (STEAM) activities.

Whether it's covering core subject areas, social and emotional learning, or fitness, this program gives all children the opportunity to learn in a safe online classroom environment, with no pop-ups, ads, or links to other websites.

This resource supports parents and caregivers too. Helpful resources include an interactive kindergarten-readiness checklist and age-related developmental milestones, along with printable trackers, charts, planners, and schedules. Weekly email notifications provide a snapshot of the child's progress and performance, helping parents to identify their child's strengths, pinpoint trouble spots, view improvement over time, and measure their progress through a kindergarten-readiness assessment.

You can access Miss Humblee's Academy at iberialibrary.org under in the Link Library.



Main Library

Storytime

10:00 AM | Every Thursday

March 6

March 13

March 20

March 27

April 3

April 10 - Special Storytime: New Iberia

Spanish Festival Storytime

April 17

April 24

St. Peter Branch

Storytime

4:00 PM | 3rd Wednesday each month

March 19

April 16

Parkview Branch

Storytime

10:00 AM | 2nd Tuesday each month

March 11

April 8

Jeanerette Branch

Storytime

4:00 PM | 3rd Thursday each month

March 20

April 17

Storytime

Ages 0-6

No Registration

Enjoy a story paired with corresponding activities such as crafts, short films, and more!

Lydia Branch

Storytime

4:00 PM | 2nd Tuesday each month

March 11

April 8

Loreauville Branch

Storytime

4:00 PM | 2nd Wednesday each month

March 12

April 9

Coteau Branch

Storytime

4:00 PM | 3rd Thursday each month

March 20

April 17

Did You Know?

There are AWE Learning computers in the children's section of the Main Library, Parkview Branch, and St. Peter Branch. These computers have educational games to help with early literacy and STREAM activities.

Looking Back on January-February Programs



The background is a bright blue color with several colorful books scattered around. There are red, green, and yellow books, some open and some closed. A white circular frame is centered on the page, containing the text. The text is in a bold, green, sans-serif font. The text reads: "THANK YOU FOR SUPPORTING YOUR IBERIA PARISH LIBRARY!".

**THANK YOU
FOR
SUPPORTING
YOUR
IBERIA
PARISH
LIBRARY!**

Iberia Parish Library
445 E. Main Street
New Iberia, LA 70560



@iberialibrary



Instagram and
Facebook

Election Time!

Your Iberia Parish Library will be on the March 29th ballot for a millage tax renewal.

Library Closures:

All Locations:

March 4: Mardi Gras

April 18: Good Friday

Main Library:

April 20: Easter

www.iberialibrary.org

Find us on social media

@iberialibrary!

Facebook and Instagram

Serving Iberia
Parish for nearly
80 years!



LIBRARY HOURS

MAIN LIBRARY

445 E. Main Street, New Iberia
Front Desk: 364-7024
Children's: 364-7134
Fax Number: 364-7042
Email: newiberialib@yahoo.com
Hours: Mon-Thurs 8:30 AM-8:00 PM
Fri & Sat 8:30 AM-5:30 PM
Sun 1:30 PM-5:30 PM

COTEAU LIBRARY

2306 Coteau Rd, New Iberia
Phone: 364-7430
Email: Coteau@iberialibrary.org
Hours: Mon-Fri 9:00 AM-6:00 PM
Sat 10:00 AM-3:00 PM

JEANERETTE LIBRARY

411 Kentucky Street, Jeanerette
Phone: 276-4014
Fax: 276-9595
Email: jeanerettebranch@yahoo.com
Hours: Mon-Fri 9:00 AM-6:00 PM
Sat 10:00 AM-3:00 PM

LOREAUVILLE LIBRARY

612 Ed Broussard Rd, New Iberia
Phone: 229-6348
Email: Loreauville@iberialibrary.org
Hours: Mon-Fri 9:00 AM-6:00 PM

LYDIA LIBRARY

4800 Freyou Rd, New Iberia
Phone: 364-7808
Email: Lydia_branch@yahoo.com
Hours: Mon-Fri 9:00 AM-6:00 PM
Sat 10:00 AM-3:00 PM

PARKVIEW LIBRARY

500 Grand Pré Blvd., New Iberia
Phone: 364-7480
Fax: 364-7714
Email: parkviewlib@yahoo.com
Hours: Mon-Fri 9:00 AM-6:00 PM
Sat 10:00 AM-3:00 PM

ST. PETER LIBRARY

1111 W. St. Peter Street, New Iberia
Phone: 364-7670
Fax: 364-7261
Email: stp_lib@yahoo.com
Hours: Mon-Fri 9:00 AM-6:00 PM
Sat 10:00 AM-3:00 PM

DELCAMBRE LIBRARY

206 W. Main Street, Delcambre
Phone: 685-2388
Email: delcambre@vermillion.lib.la.us
Hours: Mon-Thurs 10:00 AM-12:30 PM
1:30-5:30 PM
Fri 10:00 AM-12:30 PM
1:30 PM-5:00 PM
Sat 9:00 AM-12:00 PM