

Iberia Parish Library Online Resource Guide

Issue 4 | Fall 2023

Getting Started	2		
Go Virtual	4		
Challenge Yourself	5		
Read on the Go	6	Discover Your Next Read	11
Studying, Homework, & Research	7	Employment Resources	12
Language Learning	8	Engine and Vehicle	12
Genealogy	9	Legal Library	13
Education & Entertainment	10	Youth Resources	13
		LYRC Nominees	15



Upcoming Events

Visit iberia.evanced.info/ for all upcoming events and programs!

All of us here at Iberia Parish Library are proud of our continued mission to educate, enlighten, and entertain the citizens of Iberia Parish!

We are excited to continue providing the parish with great resources!

Getting Started

Signing Up for a Library Card!

It's easy and free!

That's right, your first library card is absolutely free! Information required to obtain/continue use of a library card includes, but is not limited to, the last four digits of your Social Security Number, birth date, and driver's license number (when applicable).

Adult Cards: Residents over the age of 18 will be issued library cards after showing identification with a permanent Iberia Parish address and completely filling out an application form. A driver's license, or picture ID and proof of current address (a checkbook or utility bill will be accepted for proof of address). There is a limit of 30 items which may be checked out on this card. DVDs, CDs, and videogames can only be checked out on an adult card.

Young Adult Cards: Students ages 13-17 may obtain a library card with the signature of a parent. There is a limit of 20 items which may be checked out on this card. Only young adult and children's items can be checked out with this card.

Children's Cards: Children ages 6-12 must have the signature of a parent to get a card. The parent is required to furnish the same form of identification needed for an adult card and is responsible for all materials checked out by the child. There is a limit of 10 items which may be checked out on this card. Only children's items can be checked out with this card.

Temporary Cards: These cards are issued to persons not yet having a permanent Iberia Parish address. A twenty-five dollar deposit is required. Patrons using temporary cards may check out a limit of 4 books. When a permanent local address is established, a regular borrower's card will be issued and THE DEPOSIT WILL BE REFUNDED and restrictions on borrowing will be removed.

Lost Your Card? No problem!

Library cards should be treated as credit cards. They should be carried with you at all times and reported missing at once if lost or stolen.

Replacement cards are available for \$1.00.

What can your library card do for you?

Your library card gives you internet access, access to our entire collection of books, movies, tv shows, books on cd, e-resources, and more.

Getting Started

Need a Book That We Don't Have?

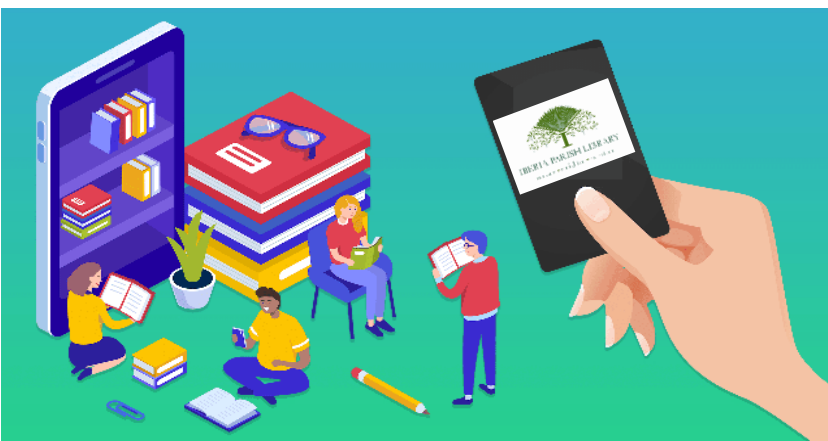
Try inter-library loans!

The library will be glad to try and borrow any item we may not own from another library. There is no charge for this service. However, at times the lending library will assess a fee, especially for copy services, and this is passed on to the borrower. Requests may be placed at any of the service desks in the library, by phone, or by e-mail. Generally, interlibrary loan items cannot be renewed. If interlibrary loan materials are not returned, the replacement fee, set by the lending library, is charged.

Renewing your items is easy!

Renewals can be done over the phone, online or in-person at any of our branches!

- Books, magazines, and audiobooks may be renewed three times, after which they must be returned.
- DVDs and CDs and videogames may be renewed once, after which they must be returned.
- Exceptions to this are items for which there are waiting lists.
- Generally, interlibrary loan items cannot be renewed.



How do fines work?

Late fees are added to your account when you fail to return your loan on time.

- Book fines are \$0.05 a day with a maximum, of \$2.00 per book.
- DVD, music CDs, and games incur fines at a rate of \$1.00 a day after a seven-day loan with a maximum of \$5.00 fine per item.
- Audio books are \$1.00 a day after a twenty-one day loan with a maximum of \$5.00 fine per item

Persons who have more than \$2.00 worth of unpaid fines lose all library privileges until the fine is paid. Three overdue notices are mailed to the address on record before the item is declared lost. When an item is more than three months overdue, the account is turned over to a collection agency which also handles accounts with excessive fines. At this time, a \$10.00 collection agency fee is charged. This must be paid along with fines even if the books are returned, no exceptions. If the books are not returned, the full price of the items plus the collection agency fee is charged to the patron.

It is always cheaper to return the items borrowed!

Go Virtual

Join our emailing list!

Stay up-to-date on what's going on at your library!

To receive our email newsletters, visit the homepage of our website at iberialibrary.org and sign up there! You will receive updates on upcoming events, new resources, and more!



Visit
Our
Website

www.iberialibrary.org

Follow us on social media!

@iberialibrary



Instagram &
Facebook



Questions?
Text a librarian
for answers!
We're here to
help! Text AskIPL
to 66746.
*Standard
message and
data rates apply.



Save time and do it online!

Requesting books has never been easier!

Access your Iberia Parish Library card account, browse our collection, renew items, and place holds easily from home through our online catalogue.

You can visit our catalogue through our website at iberialibrary.org. Just click on the link on our homepage and it will transfer you to the database. To log in to your account, all you need is your library card number and PIN.

Your PIN number is the last four digits of the phone number that the library has on file for you.

Did you know...

We have a reference librarian at our Main Branch! Our reference librarian will be happy to help with your research, interlibrary loans, and more!



Want to challenge yourself and your reading? There's a challenge for everyone at Iberia Parish Library!

1000 Books Before Kindergarten

Encourage your child to be ready to go when Kindergarten begins!

Birth–Kindergarten | Ages 0–6

Children and their guardians are invited to join us on a mission to read 1,000 books before the first day of Kindergarten! Register at any branch of Iberia Parish Library and receive your reading log. Mark on your log for every book that your child reads or is read to! For every 100 books read, your child will receive a sticker to help count down to 1,000 books! When you reach 1,000 books, bring your log in to any branch to get your child's prize or at Main to also have his or her photo taken!

Summer Reading Challenge

Each year, we read to a fun theme and challenge ourselves to read to win!

May – July | All Ages

Each year we offer a summer reading challenge for every age group! Read and reach the goal to win a prize.

New Horizons Reading Challenge

A new reading challenge for adults!

All Year Long | Ages 18+

Adults are challenged to read 100 books in a year!

Stack 'Em Up Reading Challenge

A new student reading challenge!

All Year Long | Ages 7-17

Students are challenged to read 12 books in a year! That's only one book a month!

An Introduction to Beanstack

What is Beanstack?

Beanstack is a website and app that you can use to sign up and log all of your reading challenges in one place.

How do I access Beanstack?

Beanstack can be accessed online at iberialibrary.beanstack.org OR by downloading the Beanstack app onto your smart device.

What if I don't have internet access?

No problem! You can still register for challenges and log your reading in person or over the phone at any of our branches.

Do I have to create a new account for each challenge?

No, once you create your account, you're ready to go for any future challenges!



Read on the Go

Reading doesn't have to be confined to a physical medium! Access books, audiobooks, newspapers, and magazines wherever you are, at any time of the day. The library is always OPEN with these resources.

Libby

Read your old favorites or discover something new on the go with Libby!

Libby, formerly known as Overdrive, is a great application for those that want to access all their e-books and audiobooks in one spot! The app allows you to sign in to multiple libraries, download books and audiobooks for offline reading or stream them to save space, keep track of your reading history, sample books with just one tap, and much more. If you prefer reading on your Kindle, Libby can even send your library books to your device directly from the app! Libby is available for download from the Apple App Store, Google Play, and Microsoft (Windows 10+).

Newsbank

News doesn't always have to be on paper!

With U.S. news content from local, regional, and national sources, NewsBank is the largest resource of its kind. Its diverse source types include printed and online newspapers, blogs, journals, newswires, broadcast transcripts and videos. Explore a specific issue or event through the detailed coverage provided by local reporting or compare a wide variety of viewpoints from across the country on topics such as politics, business, health, sports, cultural activities and people. This resource is a helpful tool for everything from research projects to just staying up-to-date with what's going on in the world. NewsBank includes content from: The Daily Iberian, The Times-Picayune, The Advocate, The Franklin Banner-Tribune, Associated Press, and so much more!

To access our e-resources, visit iberialibrary.org and click on our eResources link. Your PIN number may be required to access some e-resources. Your PIN is the last four digits of the phone number that the library has on file.

Flipster

Magazines in the palm of your hand

Flipster provides FREE digital access, through your library, to the most popular, current issues of your favorite magazines. Access Flipster's extensive selection from your computer, tablet or smart phone (data limits apply if not using wifi). Flipster is easy to navigate and search, providing you with a stress-free experience. Some of the most notable magazines featured on Flipster include People, Rolling Stone, Southern Living, National Geographic, and Essence, just to name a few. A Flipster app is available for download onto most smart devices.

Tumblebooks

Books that you can read AND hear for children

Check out Tumblebooks which has interactive storybooks for young readers. Stories are available in English, French and Spanish.

Studying, Homework, and Research Made Easy

Studying, homework, and research can be incredibly overwhelming for both parents and students. We are proud to offer several free online resources to help simplify the learning process and help things go a little smoother!

Learning Express

Interactive learning for every stage of life

A comprehensive interactive learning platform of tests, courses, and career preparation for students and adults. Build your math skills, improve your writing and grammar, or take practice entrance and admissions exams. Prepare yourself for the HiSET, GED, ACT, SAT, GMAT, GRE, and more.

Explore new resources for job and career acceleration and also improve your personal success skills like personal financial skills and learning skills for workplace success. LearningExpress also includes, amongst others, the following: Computer Skills Center, Job and Career Accelerator Center, Personal Success Skills Center, and Recursos Para Hispanohablantes (Resources for Spanish Speakers).

Did you know...

We have a study room at our Main Library! You must book the study room in person. The study room can be booked for two hours from 8:30 AM–7:00 PM Monday–Thursday, 8:30 AM–5:00 PM Friday–Saturday, or 1:30 to 5:00 PM on Sundays. For more information about our study room, call 337-364-7024 or ask a staff member!



Louisiana Library Connection

Useful databases all in one spot

Search a wide range of databases for full-text articles, images, literary criticism, reviews, and other digital content, such as:

- Biography Reference Center
- Britannica eBooks
- Business Searching Interface
- Consumer Health Complete
- DigitalLearn.org
- EBSCOhost
- Explora Quick Search
- Gale Legal Forms: Louisiana
- Gale Virtual Reference Library
- History Reference Center
- Hobbies & Crafts Reference Center
- Home Improvement Reference Center
- Legal Information Reference Center
- Louisiana Digital Library
- Science Reference Center
- Small Business Reference Center
- TeenBookCloud
- And More!



Studying, Homework, and Research Made Easy

LSU Archives Digital Collection **Records and documents from the South**

LSU Libraries Special Collections offers digitized free access to family papers, business records, and public documents. Collections offered, among others, include: The Louisiana and Lower Mississippi Valley Collection, The Free People of Color Collection, and The E.A. McIlhenny Natural History Collection.

Salem Press

Research made easy

Salem Press is an online collection of reference material containing topics about Literature, History, Science, Health, and Careers & Business. Just select a topic and type in a keyword for your research. Happy researching!

Homework Louisiana

Homework help for all ages

Free tutoring is available to you through Homework Louisiana! Homework Help is available Sunday through Thursday from 2:00 p.m. - 10:00 p.m. The Skills Resource Center is available 24/7. This is a great resource for Grades K-12, College Intro, and Adult Students in the subjects of Math, Science, Social Studies and English.

KnLA

A guide to Louisiana history and culture

If you want to learn more about Louisiana, KnLA is the way to go. KnLA is an online reference guide to the history and culture of Louisiana.

AtoZ World Culture

Discover different countries and cultures

AtoZ World Culture allows you to learn about the countries across the globe from Australia and Russia to the United States and Chile to everywhere in between. Learn about the cultures' food, attire, and music or learn about the countries' geography and demographics and much more!

Language Learning

Pronunciator

Language learning for teens and adults

Pronunciator is a fun and easy way to learn any of 80 languages. Register for free and start learning – at your own pace!

pronunciator 

Did you know...



We have a microfilm machine at our Main Library? You can look up old copies of the Daily Iberia dating all the way back to the 1930s!

Take a deep dive into your family's history and learn all about your ancestors and where they're from!

Ancestry

Here to help you find the information you're looking for

Ancestry.com is an online source of genealogical and historical information and consists of over 1.2 billion records in over 3,000 databases! Ancestry.com makes it easy for you: Just add a few family members to your tree, and they'll search for them in their record collections. From there, they provide you with bits of information to help you piece together your family story. Ancestry.com takes the guesswork out of genealogy research. This free database does not offer remote access, so it must be used at one of our libraries.

Heritage Quest Online

Genealogy research help designed specifically for you

With over 28,000 books currently available, the entire U.S. Federal Census, PERSI™, Freedman's Bank Records, Revolutionary War Pension Records, and other expanding collections, HeritageQuest Online is designed specifically for patrons in public libraries who are either just beginning their family research or who after years of work are still uncovering their past.

Bayou SPI

Searchable index of Louisiana periodicals from 1958 to present day.

Genealogy Collection

Books, periodicals, and in-person assistance with your genealogy research at the Parkview Branch!

The Genealogy collection is located at the Parkview Branch Library (500 Grand Pre Boulevard New Iberia, LA 70563) Hours are Monday - Friday: 9:00 a.m. - 6:00 p.m. and Saturday: 10:00 a.m. - 3:00 p.m. Get help finding the roots of your family tree on Wednesdays, 1:00 - 4:00 p.m. Our volunteer, Mrs. Shirley Broussard, will be in the Genealogy Room at the Parkview Branch Library and can assist you with any questions regarding the pursuit of your family heritage. Prior to your visit, please print and fill out the form on our website under the genealogy tab to better aid their search for information.

Heritage Room

Research Black history at the St. Peter Branch!

The Black history collection is located at the St. Peter Branch Library (1111 W St. Peter St, New Iberia, LA 70560) . Hours are Monday - Friday: 9:00 a.m. - 6:00 p.m. and Saturday: 10:00 a.m. - 3:00 p.m. Discover a wide-range of documents, books, and periodicals both local and across the nation.

Freegal

Free song downloads AND streaming

Freegal® is a free music service from your library. All you need is your library card number! Freegal offers access to about 9 million songs and over 15,000 music videos. You can download 5 MP3 files per week! First download the songs to your computer, then transfer the files to your iTunes account or other music account, to access it on your mobile device or you can access Freegal directly from their app.

Listen to these albums and more on Freegal!



Tony Bennett *Duets* An American Classic

Featuring

Bono
Michael Bublé
Elvis Costello
Celine Dion
Dixie Chicks
Billy Joel
Elton John
Juanes
Diana Krall
k.d. lang
John Legend
Paul McCartney
Tim McGraw
George Michael
Sting
Barbra Streisand
James Taylor
Stevie Wonder



Did you know...

Booklist Reader is a monthly online magazine that features the latest book reviews, so deciding what to read next will be a breeze! Check out *Booklist Reader* on the library's website homepage and eResource page!



DigitalLearn

Learn Computer Basics and More!

If you are new to computers, haven't used them for a while, are a little unsure and uncomfortable, or just need a bit of a refresher, we have the tools to help you tackle technology at your own pace and gain the confidence you need to succeed.

Included in DigitalLearn.org is a collection of self-directed tutorials for end-users to increase their digital literacy. Feedback from public library staff directed PLA to develop courses on the most basic skills, such as using a computer, navigating a web site, and searching. Modules are video-based with narration, typically 6 to 22 minutes long, written in plain language (communication learners can understand the first time they hear or read it), and often at an elementary to middle school reading level. DigitalLearn.org provides intentional, foundational instruction to be taken at the pace of the learner.

[This resource can be found on Louisiana Library Connection. See page 7 for more details about Louisiana Library Connection.](#)

Discover Your Next Read

Don't know what to read next? Can't figure out which book comes next in a series? Need a book that's not in our system? We can help!

Novelist

Novelist Plus

A unique, easy-to-use, searchable online database with over 251,000 fiction and nonfiction titles. NoveList Plus includes specialized content such as Read-a-likes for popular authors, book discussion guides, award lists and much more!

Novelist K8 Plus

NoveList K-8 Plus is a great tool to use when looking for your next great read! Looking for adventure stories, mysteries, fantasy or something similar to Diary of a Wimpy Kid? You will find it all here.

Fantastic Fiction

Easily find the next book in a series or discover more books by your favorite author!

Fantastic Fiction hosts bibliographies for over 30,000 authors and information on over 350,000 books.

Loan Shark

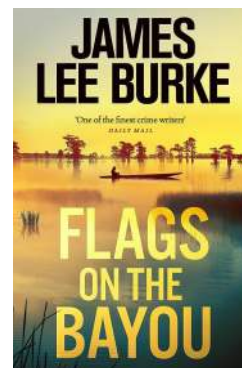
Get your hands on that book you've been wanting to read!

Can't find a particular item in our online catalog? Request it from another parish through interlibrary loan. Requests can also be made via phone at 337-364-7305 or by visiting the Reference desk.

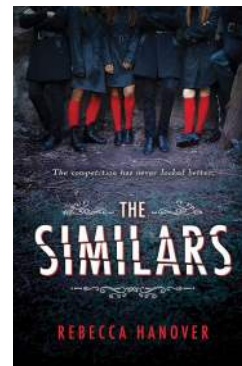


Featured Books on Libby

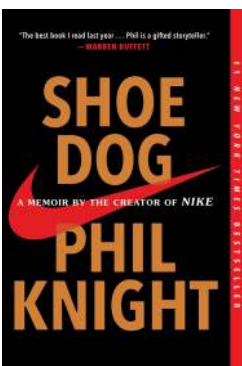
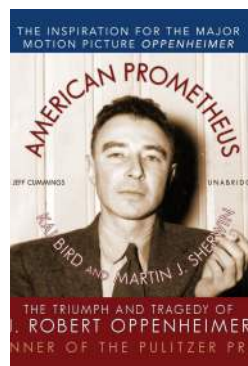
Adult Fiction



Young Adult Fiction



Non-Fiction



Searching for a job, deciding on a career, and preparing for the interview process can be overwhelming. Thankfully, we have several resources available to you that will help make the process smoother.

Occupational Outlook Handbook

The go-to handbook for career research

A guide to career information about hundreds of occupations!

Louisiana Workforce

A one-stop website for all things business and job related

The Louisiana Workforce Commission's vision is to make Louisiana the best place in the country to get a job or grow a business, and our goal is to be the country's best workforce agency. Their mission is simple and straightforward - we put people to work. Their values include: integrity and respect, open communication, accountability, teamwork, continuous improvement, and adaptability: The LWC is ideally positioned and structured to support and serve Louisiana's employers, job seekers and workforce partners.



Auto Repair Source

Vehicle Repair Solutions

If you have questions regarding a vehicle, input the vehicle's year, make, and model to access information from airbags to wiring diagrams!

Drivers- Ed

Prepare for your permit test!

Driving-Tests.org is a website for learners who want to practice their skills before taking the real Louisiana DMV permit test. There are practice tests for cars, motorcycles, and CDL (Commercial Driver's License) plus online driver's manuals and FAQ section.

Small Engine

Repair Reference Center

User-friendly guide for small engines

Browse *Small Engine Repair Reference Center* content by product type, manufacturer, engine type, series, model/model numbers and component.

Small Engines Covered:

- Air-cooled engines
- ATVs
- Chainsaws
- Commercial mowers
- Diesel Engines
- Generators
- Motorcycles
- Lawn mowers
- Rotary tillers
- And more!

Louisiana State Bar

Free legal assistance

The Legal Education & Assistance Program (LEAP) is designed to help you find information about your legal issue as well as resources, services, and attorneys in your area. LEAP is a partnership of the LSBA, LSU Law Library, Law Library of Louisiana, Louisiana Library Association, Southeast Louisiana Legal Services, State Library of Louisiana, and individual public libraries across the state. LEAP hosts "Lawyers in Libraries" events annually during the last week of October. However, legal resources can be found year-round through the Find Legal Help Portal or by selecting your parish from the drop-down menu.

Legal Forms Library

Easily accessible legal forms

Need a legal form? Trying to find a lawyer? Or just need more information on a legal term? Legal Forms Library is here to help.

Municode

View the New Iberia Municipal Code online.

Tax Forms

Looking for certain tax forms? Visit irs.gov/forms-instructions to see tax forms and their instructions for current and previous years.

TeenBookCloud

Access online books for teens!

TeenBookCloud is an online database of YA/Teen eBooks and educator resources perfect for your middle school, high school, or public library. TeenBookCloud offers a wide selection of Graphic Novels, Enhanced Novels, eBooks, classic literature, videos, educator resources, and audiobooks. The collection is available online around the clock. No downloads, no waiting! If you can access the internet, you can be reading, watching, or listening to fantastic content in an instant! [This resource can be found on Louisiana Library Connection. See page 7 for more details about Louisiana Library Connection.](#)

Fiero Code

Coding for kids and teens!

Fiero Code is a self-guided online software program that teaches you how to code through hundreds of coding tutorials and dozens of real-world projects. Fiero Code offers a gamified learning experience with customizable avatars as you learn to build websites, video games, apps, and more! Fiero Code offers more than 300 coding tutorials all geared towards people ages 8-18!



Youth E-Resources:

Children

- Reading Challenges
- Tumblebooks
- Homework LA
- Novelist K8 Plus

Tweens & Teens

- Reading Challenges
- Flipster
- Learning Express
- Homework LA
- Novelist K8 Plus and Novelist Plus
- Fantastic Fiction
- Occupational Outlook Handbook
- Drivers-Ed
- Freegal
- TeenBookCloud
- Fiero Code



To access our e-resources, visit iberialibrary.org and click on our eResources link. Your PIN number may be required to access some e-resources. Your PIN is the last four digits of the phone number that the library has on file.

A Look Into Accelerated Reading Levels

What is Accelerated Reader?

Accelerated Reader is a software program for K-12 schools for monitoring reading practice. The Iberia Parish Library may help you navigate your search for these books on your level. All branches of your Iberia Parish Library have children's and teen books to fit the needs of each student.

How do I know if a book is AR?

Each book will have a stamp on the inside back cover or the first few pages. This stamp will indicate the reading level, AR points, and a Quiz number. If you are unsure of a book's AR information, a staff member would be happy to assist you!

Important links:

www.arbookfind.com | www.iberialibrary.org

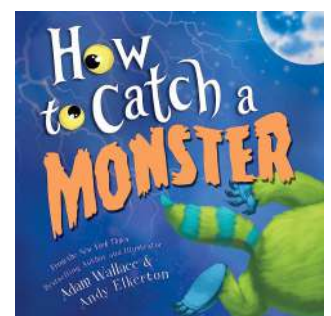
Examples:



Level 0



Level 1



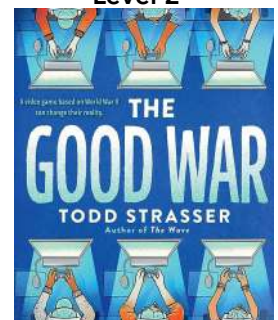
Level 2



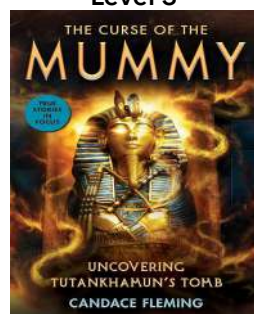
Level 3



Level 4



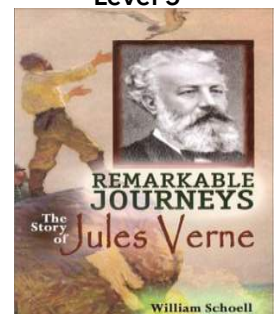
Level 5



Level 6



Level 7



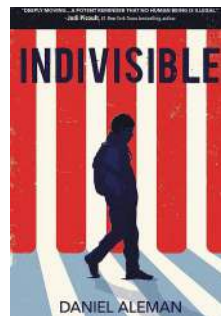
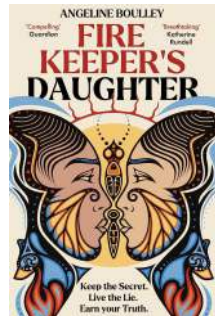
Level 8

Louisiana Young Reader's Choice Nominees

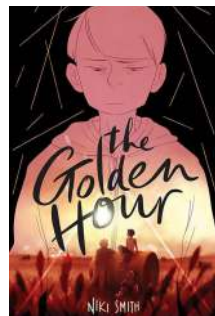
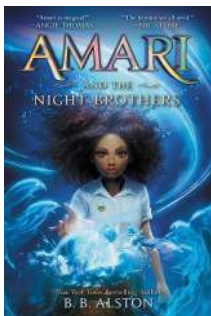
What is LYRC?

The purpose of the program is to foster a love of reading in the children of Louisiana by motivating them to participate in the recognition of outstanding books. The lists are well-balanced selections of high-quality fiction, nonfiction, and poetry. Now entering its 23rd year, the program continues to encourage Louisiana's youth to read for pleasure. The Louisiana Young Readers' Choice Award is a reading enrichment program of the Louisiana Center for the Book in the State Library.

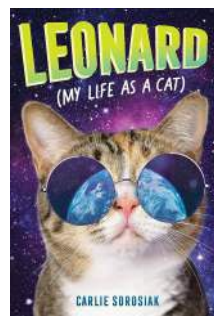
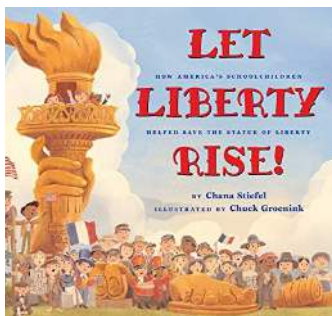
Teen Books:



Grade 6-8 Books:



Grade 3-5 Books:



How do I vote?

To find the full list of books and to vote for your favorite, visit www.state.lib.la.us.
page 15

Follow Us on Social Media

Stay up-to-date with the library by following us on our Facebook and Instagram pages. You'll be able to see current photos of programs and book displays. You'll also see announcements from the library. Check out our Instagram Stories to participate in daily quizzes and polls!

Facebook

Help us reach 4,000 likes on Facebook! Look up Iberia Parish Library on Facebook and click the Like button.

Instagram

Help us reach 1,500 followers on Instagram. Search @iberialibrary on Instagram and click Follow.



**Iberia Parish Library
445 E. Main Street
New Iberia, LA 70560**



Join us on social media!

Join us on Facebook and Instagram for trivia, Q&As, book recommendations, polls, games, book battles, debates! There's always something new happening on our pages and we'd love for you to join in on the fun!

www.iberialibrary.org
iberia.evanced.info/signup

Find us on social media
@iberialibrary!
Facebook and Instagram

LIBRARY HOURS

MAIN LIBRARY

445 E. Main Street, New Iberia
Front Desk: 364-7024
Children's: 364-7134
Fax Number: 364-7042
Email: newiberialib@yahoo.com
Hours: Mon.-Thurs 8:30 am- 8:00 pm
Fri. & Sat 8:30 am - 5:30 pm
Sun 1:30 pm - 5:30 pm

COTEAU LIBRARY

2306 Coteau Rd, New Iberia
Phone: 364-7430
Email: Coteau@iberialibrary.org
Hours: Mon - Fri 9:00 am - 6:00 pm

JEANERETTE LIBRARY

411 Kentucky Street, Jeanerette
Phone: 276-4014
Fax: 276-9595
Email: jeanerettebranch@yahoo.com
Hours: Mon - Fri 9:00 am - 6:00 pm
Sat 10:00 am - 3:00 pm

LOREAUVILLE LIBRARY

612 Ed Broussard Rd, Loreauville
Phone: 229-6348
Email: Loreauville@iberialibrary.org
Hours: Mon - Fri 9:00 am - 6:00 pm

LYDIA LIBRARY

4800 Freyou Road, New Iberia
Phone: 364-7808
Email: Lydia_branch@yahoo.com
Hours: Mon - Fri 9:00 am - 6:00 pm
Sat 10:00 am - 3:00 pm

PARKVIEW LIBRARY

500 Grand Pré Blvd., New Iberia
Phone: 364-7480
Fax: 364-7714
Email: parkviewlib@yahoo.com
Hours: Mon - Fri 9:00 am - 6:00 pm
Sat 10:00 am - 3:00 pm

ST. PETER LIBRARY

1111 W. St. Peter Street, New Iberia
Phone: 364-7670
Fax: 364-7261
Email: stp_lib@yahoo.com
Hours: Mon - Fri 9:00 am - 6:00 pm
Sat 10:00 am - 3:00 pm

DELCAMBRE LIBRARY

206 W. Main Street, Delcambre
Phone: 685-2388
Email: delcambre@vermilion.lib.la.us
Hours: Mon-Thurs 10:00am - 12:30pm
1:30 pm - 5:30 pm
Fri 10:00 am - 12:30 pm
1:30 pm - 5:00 pm
Sat. 9:00 am - 12:00 pm

